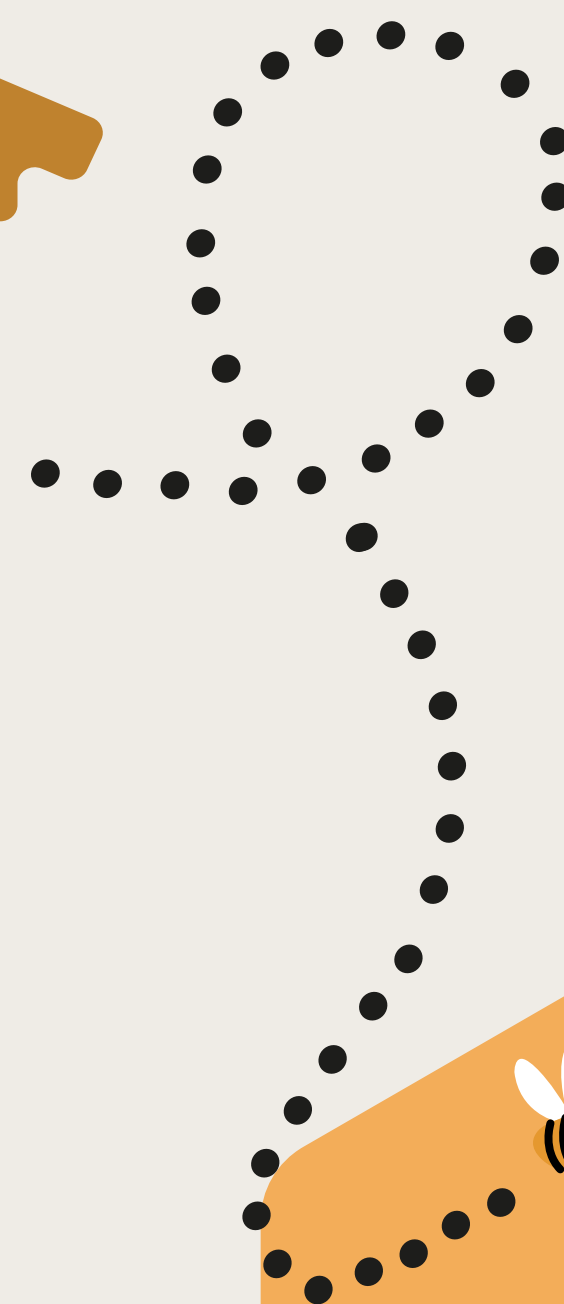
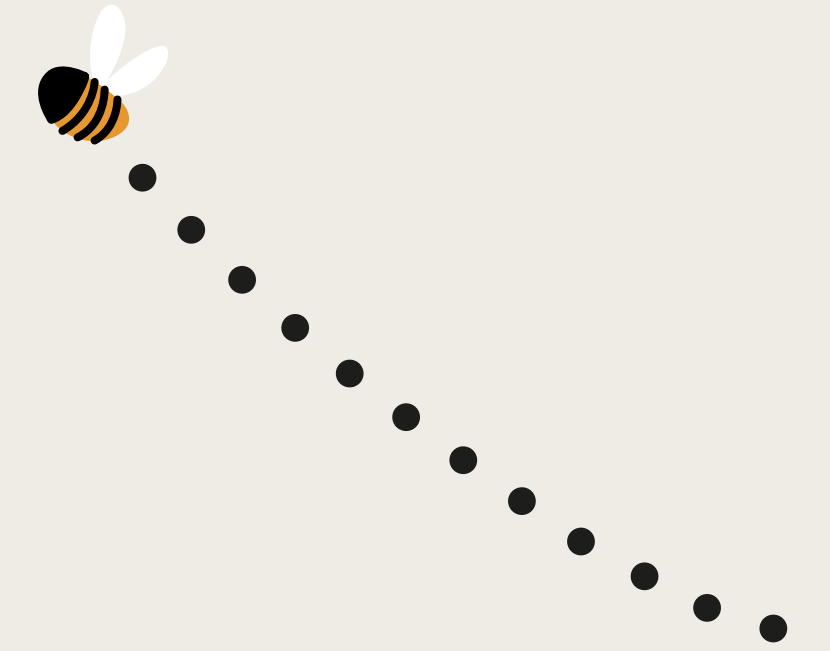


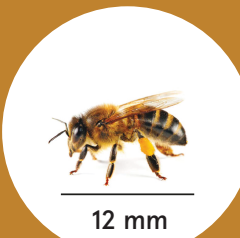
Bees at work!

Coexisting with bees in cities is easy and natural. After all, honey bees are just one of a number of pollinators like butterflies, bumble bees, and wild bees with whom we already share our urban space.



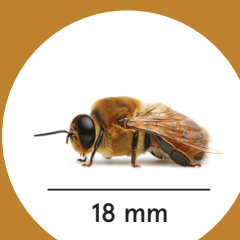
Worker bees (Female)

Approximately 90% of the bees in a hive are female. Over the course of their short lives – just 30 to 45 days – they stay hard at work: they build the hive's wax honeycombs, gather nectar and transform it into honey.



Drones (Male)

Approximately 10% of the bees in a hive are male. On average, their lifespan varies from one to two months. Drones don't have stingers; instead, they have a reproductive organ, and their main role is to fertilize a virgin queen from a neighboring hive.



Queen

Her Majesty lives anywhere from 3 to 5 years and can lay up to 2,000 eggs per day. She produces odors called pheromones that make bees behave in specific ways.



Advantages of urban beekeeping

Urban beekeeping creates the opportunity to educate citizens about the environment, repurpose unused spaces within our cities, and produce hyper-local honey.

Problems with industrial agriculture

Industrial agriculture has a huge impact on the health of our ecosystems. The practice makes use of harmful pesticides to grow monocultures, which in turn precipitate habitat loss for species of all kinds.

The hive

At the height of summer, each hive contains up to 50,000 bees, producing 15 kg (30 lb) of honey in a single year. "Boxes" are added to the hive as the colony grows.

The honey

Honey is produced with plant and flower nectar collected by bees. Once they've brought it back to the hive, they add enzymes to the nectar before storing it in sealed honeycombs.

The bees

Honey bees are just one of a number of pollinators. Together, they're all responsible for pollinating one third of what you find on your plate.

The winter

When the temperature drops, bees form a cluster around the queen, vibrating their thoracic muscles to maintain an internal temperature of 35 °C (95 °F).



www.alveole.buzz

240FOURTH

