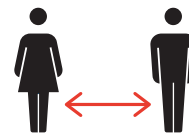


# THE KEY TO PREVENTING THE SPREAD OF COVID-19

To ensure the safety of everyone, QuadReal requests that you wear a mask in accordance with advice provided by Health Canada and maintain a physical distance of no less than 6ft/2m when interacting within QuadReal properties.



Keep a safe distance apart  
2m / 6ft



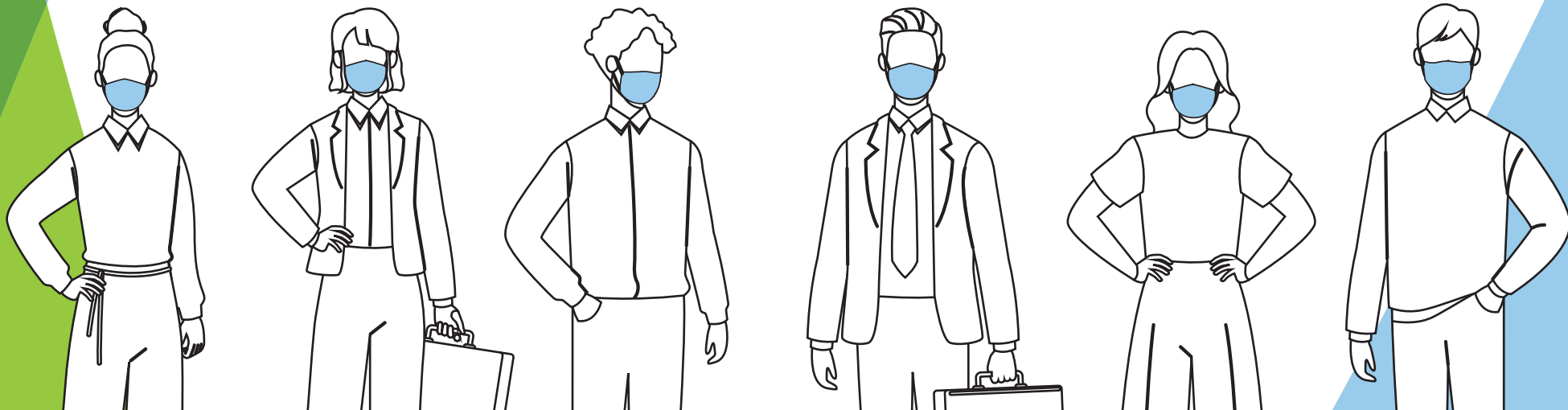
Wash your hands frequently



Avoid touching your eyes, nose and mouth

Wearing masks indoors or when you cannot maintain physical distancing, can help protect others around you.

We will limit the spread of COVID-19 if we all wear masks and wear them correctly.



# HOW TO WEAR A NON-MEDICAL MASK SAFELY

## ✓ DO'S



Ensure mask is not damaged or dirty before using



Clean your hands before and after touching the mask



Adjust the mask to your face so there are no gaps on the sides



Make sure the mask covers your mouth, nose and chin

The best type of mask has two or more layers of washable, breathable fabric.



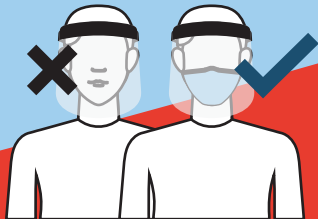
Remove the mask using the straps behind the ears or head



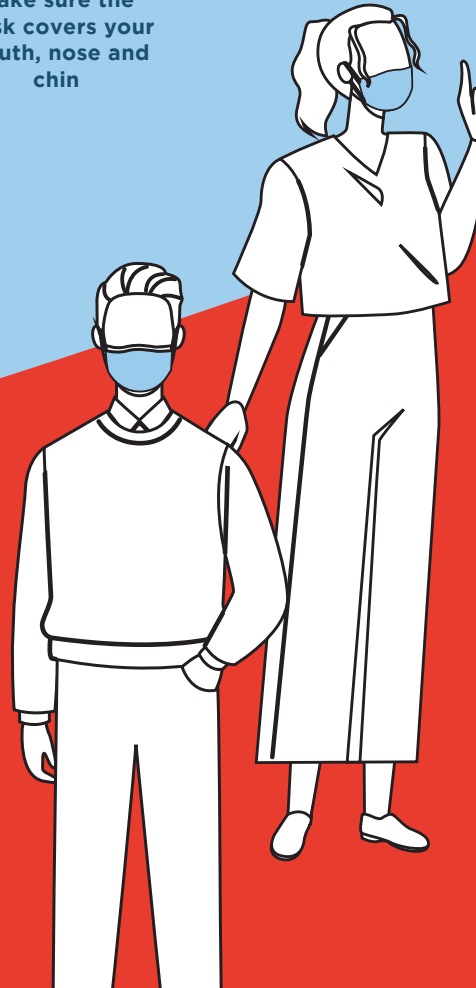
Pull the mask away from your face keeping hold of only the straps



Store the mask in a clean plastic, resealable bag



Public health authorities advise that face shields worn without a mask, mask with exhalation valves and gaiters (neck scarves) do not provide sufficient protection.



## DON'TS ✗



Do not use a mask that is damaged, dirty or wet



Do not wear a loose mask



Do not wear the mask under the nose



Do not remove the mask when there are people within 6ft/2m



Do not share your mask with others



Do not use a mask that makes it hard to breathe